

Courtesy Of David J Schmitz Of RE/MAX River City

# \$294,900 - 316 10545 Saskatchewan Drive, Edmonton

MLS® #E4428291

**\$294,900**

2 Bedroom, 2.00 Bathroom, 973 sqft  
Condo / Townhouse on 0.00 Acres

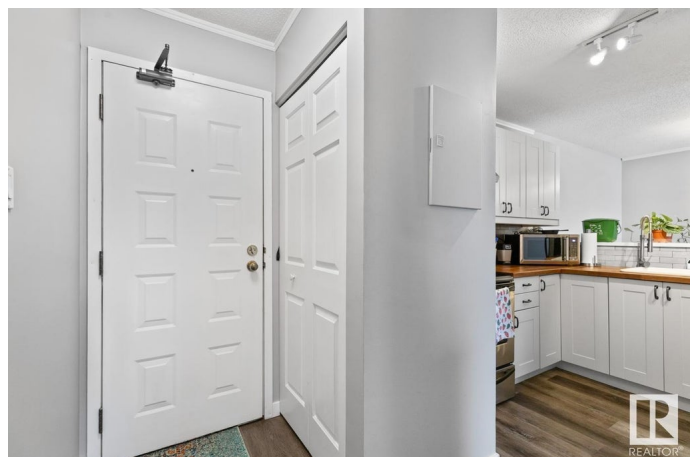
Strathcona, Edmonton, AB

Welcome to this bright and spacious 2 bed, 2 bath apartment that offers 973 sq ft of living space! The primary suite boasts a 4-piece ensuite, while the open-concept kitchen offers ample storage, perfect for all your culinary needs. Enjoy your morning coffee on the large north-facing balcony with beautiful downtown views. This well-appointed building features fantastic amenities, including a gym and an amenities room for your needs. Plus, enjoy the convenience of heated, underground parking. Located in a prime central location, you're just minutes from downtown, the river valley, and all essential amenities, with quick access to the entire city. Whether you're looking for comfort, convenience, or a vibrant urban lifestyle, this is the perfect place to call home!

Built in 1984

## Essential Information

MLS® #	E4428291
Price	\$294,900
Bedrooms	2
Bathrooms	2.00
Full Baths	2
Square Footage	973
Acres	0.00
Year Built	1984



Type	Condo / Townhouse
Sub-Type	Lowrise Apartment
Style	Single Level Apartment
Status	Active

### Community Information

Address	316 10545 Saskatchewan Drive
Area	Edmonton
Subdivision	Strathcona
City	Edmonton
County	ALBERTA
Province	AB
Postal Code	T6E 6C6

### Amenities

Amenities	See Remarks
Parking	Heated, Underground

### Interior

Interior Features	ensuite bathroom
Appliances	Dishwasher-Built-In, Dryer, Oven-Microwave, Refrigerator, Stove-Electric, Washer, Window Coverings
Heating	Baseboard, Oil
# of Stories	12
Stories	1
Has Basement	Yes
Basement	None, No Basement

### Exterior

Exterior	Wood, Brick
Exterior Features	Public Transportation, Schools, Shopping Nearby, View Downtown, See Remarks
Roof	Asphalt Shingles
Construction	Wood, Brick
Foundation	Concrete Perimeter

### Additional Information

Date Listed	March 31st, 2025
Days on Market	4

Zoning	Zone 15
Condo Fee	\$451

DATA IS DEEMED RELIABLE BUT IS NOT GUARANTEED ACCURATE BY THE REALTORS® ASSOCIATION OF EDMONTON. COPYRIGHT 2025 BY THE REALTORS® ASSOCIATION OF EDMONTON. ALL RIGHTS RESERVED. Trademarks are owned or controlled by the Canadian Real Estate Association (CREA) and identify real estate professionals who are members of CREA (REALTOR®, REALTORS®) and/or the quality of services they provide (MLS®, Multiple Listing Service®)

Listing information last updated on April 4th, 2025 at 2:32am MDT