

Courtesy Of Nadeem Mirza Of Initia Real Estate

\$359,900 - 10214 155 Street, Edmonton

MLS® #E4427840

\$359,900

4 Bedroom, 2.50 Bathroom, 1,035 sqft
Single Family on 0.00 Acres

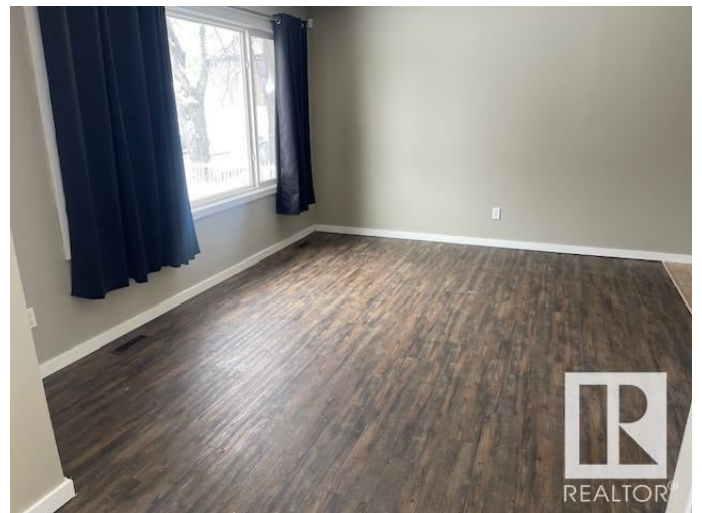
Canora, Edmonton, AB

This property features a separate entrance to the basement, two kitchens, and a versatile layout with three bedrooms upstairs and one in the basement. The updated main floor boasts vinyl flooring, modern white shaker cabinets, and quartz countertops. The master suite includes a private 2-piece ensuite and a walk-through closet. The basement offers a spacious living area, a second kitchen, a bedroom, a laundry room, and a full bathroom—perfect for added rental income or an in-law suite. The property also includes a nicely sized yard with a shed and back-alley parking. Located in a great area near various amenities, the river valley, and with quick access to downtown, this property is ideal for investors!

Built in 1975

Essential Information

| | |
|----------------|-----------|
| MLS® # | E4427840 |
| Price | \$359,900 |
| Bedrooms | 4 |
| Bathrooms | 2.50 |
| Full Baths | 2 |
| Half Baths | 1 |
| Square Footage | 1,035 |
| Acres | 0.00 |



| | |
|------------|---------------|
| Year Built | 1975 |
| Type | Single Family |
| Sub-Type | Half Duplex |
| Style | Bungalow |
| Status | Active |

Community Information

| | |
|-------------|------------------|
| Address | 10214 155 Street |
| Area | Edmonton |
| Subdivision | Canora |
| City | Edmonton |
| County | ALBERTA |
| Province | AB |
| Postal Code | T5P 2L7 |

Amenities

| | |
|-----------|-------------------------|
| Amenities | Deck |
| Parking | Front/Rear Drive Access |

Interior

| | | | | |
|-------------------|-------------------------------|--------|---------|-------------------|
| Interior Features | ensuite bathroom | | | |
| Appliances | Dishwasher-Built-In, | Dryer, | Washer, | Window Coverings, |
| | Refrigerators-Two, Stoves-Two | | | |
| Heating | Forced Air-1, Natural Gas | | | |
| Stories | 2 | | | |
| Has Basement | Yes | | | |
| Basement | Full, Finished | | | |

Exterior

| | |
|-------------------|--|
| Exterior | Wood, Stucco |
| Exterior Features | Back Lane, Commercial, Public Transportation |
| Roof | Asphalt Shingles |
| Construction | Wood, Stucco |
| Foundation | Concrete Perimeter |

Additional Information

| | |
|----------------|------------------|
| Date Listed | March 27th, 2025 |
| Days on Market | 8 |
| Zoning | Zone 21 |

DATA IS DEEMED RELIABLE BUT IS NOT GUARANTEED ACCURATE BY THE REALTORS® ASSOCIATION OF EDMONTON. COPYRIGHT 2025 BY THE REALTORS® ASSOCIATION OF EDMONTON. ALL RIGHTS RESERVED. Trademarks are owned or controlled by the Canadian Real Estate Association (CREA) and identify real estate professionals who are members of CREA (REALTOR®, REALTORS®) and/or the quality of services they provide (MLS®, Multiple Listing Service®)

Listing information last updated on April 4th, 2025 at 2:47am MDT