

\$589,000 - 6812 188 Street, Edmonton

MLS® #E4426432

\$589,000

5 Bedroom, 3.50 Bathroom, 2,045 sqft
Single Family on 0.00 Acres

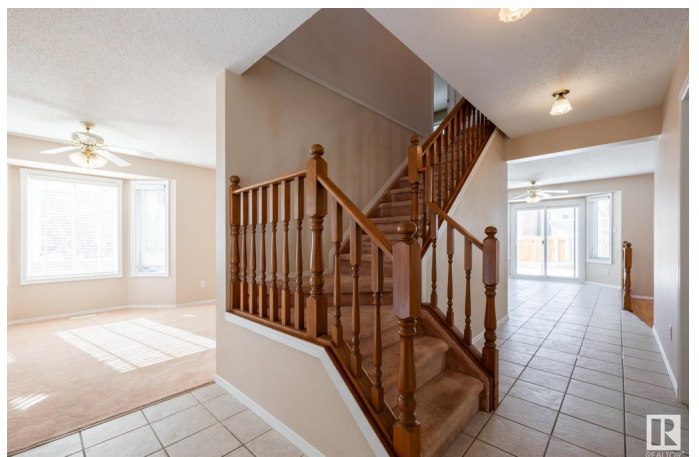
Ormsby Place, Edmonton, AB

Beautifully updated 2 storey home with a rare find huge backyard & situated in a massive 7300+ sq.ft. lot in a much desirable westend neighbourhood. This custom built, bright & spacious original owner home features classic layout with formal living/dining room, den, updated kitchen with granite counter top, and a large dining nook open to the family room. 4 large bedroom up & a nicely finished basement w/ 9 ft. ceilings, large rec room, bedroom, flex room and full bath. Numerous recent upgrades & features include air conditioning, roof shingles, triple-pane low E windows, high efficiency furnace, hot water tank, double jacuzzi tub ensuite & huge walking closet in primary bedroom, paint, quality window blinds, extra large windows, huge two tier deck & gorgeous backyard ideal for any family outdoor living space & entertaining. Conveniently located near schools, major shopping, public transit, parks & recreational amenities. Perfect & affordable family home, move in ready!

Built in 1990

Essential Information

MLS® #	E4426432
Price	\$589,000
Bedrooms	5



Bathrooms	3.50
Full Baths	3
Half Baths	1
Square Footage	2,045
Acres	0.00
Year Built	1990
Type	Single Family
Sub-Type	Detached Single Family
Style	2 Storey
Status	Active

Community Information

Address	6812 188 Street
Area	Edmonton
Subdivision	Ormsby Place
City	Edmonton
County	ALBERTA
Province	AB
Postal Code	T5T 4X3

Amenities

Amenities	Air Conditioner, Deck, 9 ft. Basement Ceiling
Parking	Double Garage Attached, Front Drive Access

Interior

Interior Features	ensuite bathroom
Appliances	Air Conditioning-Central, Dishwasher-Built-In, Dryer, Fan-Ceiling, Garage Control, Garage Opener, Hood Fan, Refrigerator, Stove-Electric, Washer, Window Coverings
Heating	Forced Air-1, Natural Gas
Fireplace	Yes
Fireplaces	Tile Surround
Stories	3
Has Basement	Yes
Basement	Full, Finished

Exterior

Exterior	Wood, Stucco
Exterior Features	Cul-De-Sac, Fenced, Landscaped, Park/Reserve, Playground Nearby,

Public Swimming Pool, Public Transportation, Schools, Shopping
Nearby, See Remarks

Roof Asphalt Shingles
Construction Wood, Stucco
Foundation Concrete Perimeter

Additional Information

Date Listed March 18th, 2025
Days on Market 25
Zoning Zone 20

DATA IS DEEMED RELIABLE BUT IS NOT GUARANTEED ACCURATE BY THE REALTORS® ASSOCIATION OF EDMONTON. COPYRIGHT 2025 BY THE REALTORS® ASSOCIATION OF EDMONTON. ALL RIGHTS RESERVED. Trademarks are owned or controlled by the Canadian Real Estate Association (CREA) and identify real estate professionals who are members of CREA (REALTOR®, REALTORS®) and/or the quality of services they provide (MLS®, Multiple Listing Service®)

Listing information last updated on April 12th, 2025 at 7:02am MDT