

Courtesy Of Erin Holowach Of ComFree

# \$179,900 - 202 10125 83 Avenue, Edmonton

MLS® #E4425093

**\$179,900**

2 Bedroom, 1.00 Bathroom, 784 sqft  
Condo / Townhouse on 0.00 Acres

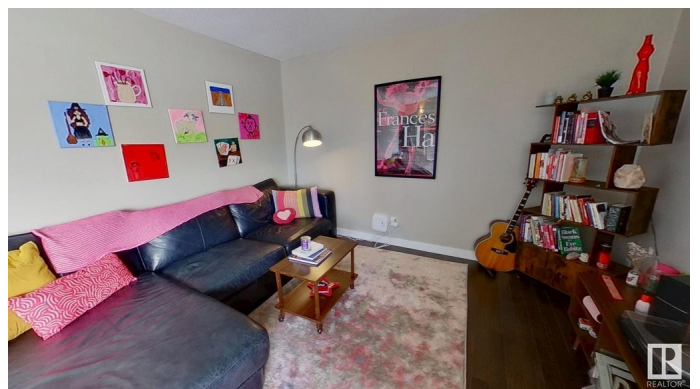
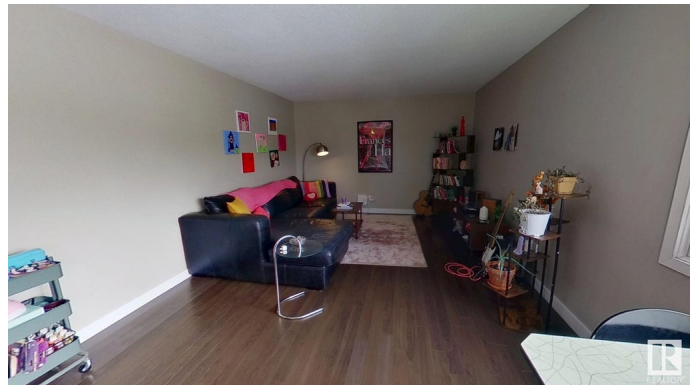
Strathcona, Edmonton, AB

Charming 2-Bedroom Condo – Prime Location Near U of A & Whyte Ave! This bright and inviting 2-bedroom unit is ideally situated just blocks from the University of Alberta, Whyte Avenue, the scenic river valley, and offers a quick commute to downtown Edmonton! Enjoy ample natural light, modern laminate flooring, and plenty of storage in this well-designed space. The kitchen and bathroom have been upgraded with a stylish tile backsplash and sleek stainless steel appliances, including a dishwasher. Plus, the covered carport adds extra convenience and protection for your vehicle. Nestled in the back of the building for added privacy, this unit offers a quiet retreat while still being steps away from shopping, schools, restaurants, and public transportation. Laundry facilities are conveniently located within the building, making daily routines a breeze.

Built in 1969

## Essential Information

MLS® #	E4425093
Price	\$179,900
Bedrooms	2
Bathrooms	1.00
Full Baths	1
Square Footage	784



Acres	0.00
Year Built	1969
Type	Condo / Townhouse
Sub-Type	Lowrise Apartment
Style	Single Level Apartment
Status	Active

### **Community Information**

Address	202 10125 83 Avenue
Area	Edmonton
Subdivision	Strathcona
City	Edmonton
County	ALBERTA
Province	AB
Postal Code	T6E 2C5

### **Amenities**

Amenities	Intercom, No Smoking Home, Parking-Plug-Ins, Parking-Visitor
Parking	Single Carport

### **Interior**

Appliances	Dishwasher-Built-In, Intercom, Microwave Hood Fan, Refrigerator, Stove-Electric, Window Coverings
Heating	Baseboard, Water
# of Stories	1
Stories	1
Has Basement	Yes
Basement	Full, Finished

### **Exterior**

Exterior	Wood, Brick, Vinyl
Exterior Features	Landscaped, Playground Nearby, Public Transportation, Schools, Shopping Nearby
Roof	Tar & Gravel
Construction	Wood, Brick, Vinyl
Foundation	Concrete Perimeter

### **Additional Information**

Date Listed	March 11th, 2025
-------------	------------------

Days on Market	31
Zoning	Zone 15
Condo Fee	\$619

DATA IS DEEMED RELIABLE BUT IS NOT GUARANTEED ACCURATE BY THE REALTORS® ASSOCIATION OF EDMONTON. COPYRIGHT 2025 BY THE REALTORS® ASSOCIATION OF EDMONTON. ALL RIGHTS RESERVED. Trademarks are owned or controlled by the Canadian Real Estate Association (CREA) and identify real estate professionals who are members of CREA (REALTOR®, REALTORS®) and/or the quality of services they provide (MLS®, Multiple Listing Service®)

Listing information last updated on April 11th, 2025 at 4:47am MDT