

\$1,866,000 - 108 Windermere Drive, Edmonton

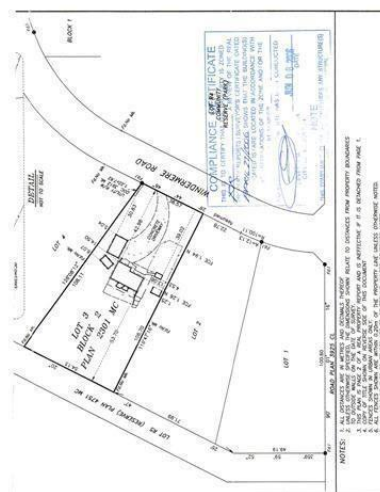
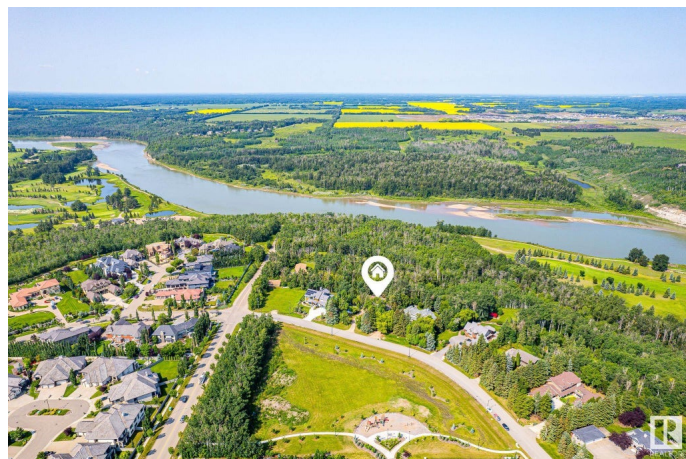
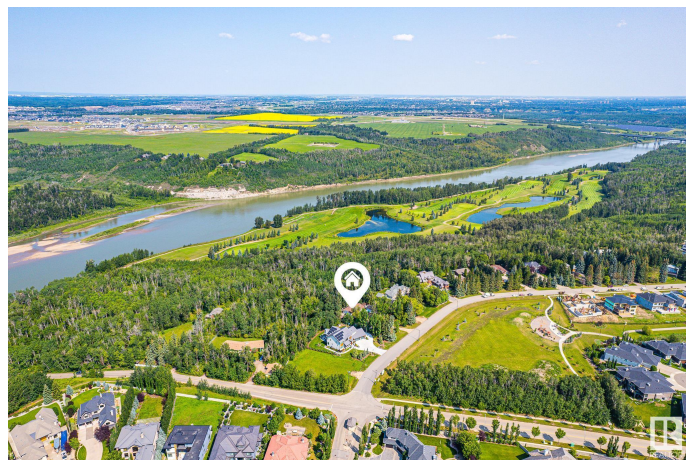
MLS® #E4424459

\$1,866,000

0 Bedroom, 3.00 Bathroom,
Single Family on 0.00 Acres

Windermere, Edmonton, AB

Prestigious country-living right in the city with the opportunity to build your dream home without any compromises. WALKOUT BASEMENT home, a private and secluded PANORAMIC VIEW of the river, river valley and River Ridge golf course, high atop the banks of the North Saskatchewan River. 4,837.10 m² / 1.2 acres beautiful park like acreage. 4 Bedrooms, 3 Baths. Master with Ensuite and oversized private outdoor deck with the most EXQUISITE VIEW! Main Floor includes large GREAT ROOM, DINING ROOM, KITCHEN and over 1,000 sq.ft deck. Lower WALKOUT level includes large family ROOM and GAMES ROOM, SUITE including 4th BEDROOM, Triple car garage! No walking trail at the back for extra privacy. One of the best lots in the city. A must see.



Essential Information

| | |
|------------|-----------------|
| MLS® # | E4424459 |
| Price | \$1,866,000 |
| Bathrooms | 3.00 |
| Full Baths | 3 |
| Acres | 0.00 |
| Type | Single Family |
| Sub-Type | Vacant Lot/Land |
| Style | Bungalow |

Status Active

Community Information

Address 108 Windermere Drive
Area Edmonton
Subdivision Windermere
City Edmonton
County ALBERTA
Province AB
Postal Code T6W 0S4

Amenities

Parking Spaces 6
Parking Triple Garage Detached

Interior

Interior Features ensuite bathroom
Heating Natural Gas

Exterior

Exterior Features Ravine View, River Valley View, River View

Additional Information

Date Listed March 7th, 2025
Days on Market 36
Zoning Zone 56

DATA IS DEEMED RELIABLE BUT IS NOT GUARANTEED ACCURATE BY THE REALTORS® ASSOCIATION OF EDMONTON. COPYRIGHT 2025 BY THE REALTORS® ASSOCIATION OF EDMONTON. ALL RIGHTS RESERVED. Trademarks are owned or controlled by the Canadian Real Estate Association (CREA) and identify real estate professionals who are members of CREA (REALTOR®, REALTORS®) and/or the quality of services they provide (MLS®, Multiple Listing Service®)

Listing information last updated on April 12th, 2025 at 7:02am MDT