

# \$178,800 - 206 10731 84 Avenue, Edmonton

MLS® #E4423455

**\$178,800**

2 Bedroom, 1.00 Bathroom, 908 sqft

Condo / Townhouse on 0.00 Acres

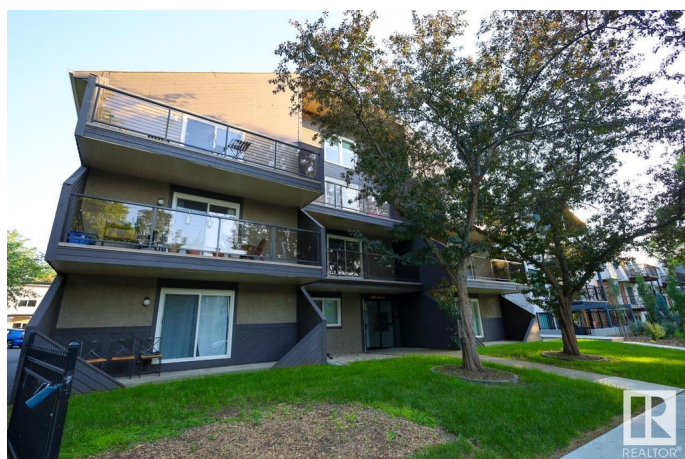
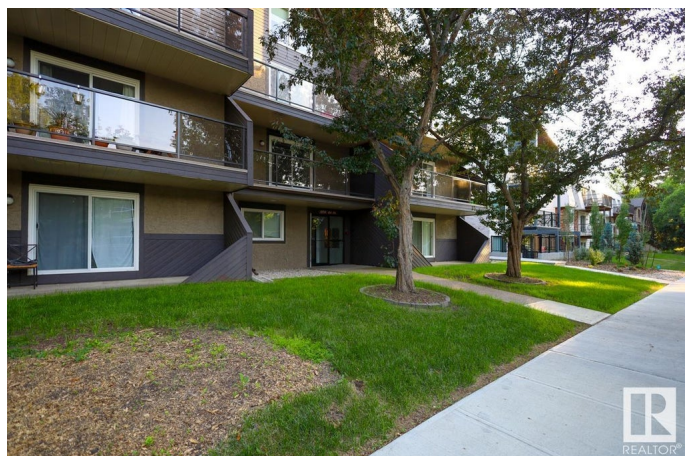
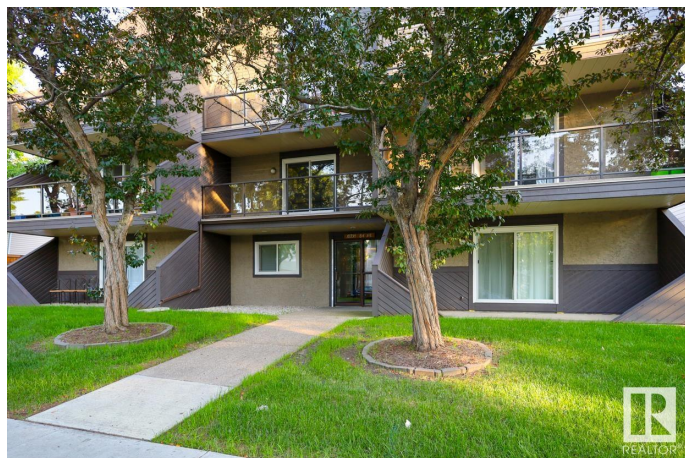
Garneau, Edmonton, AB

Welcome to Faculty House, nestled in the heart of the highly desirable Garneau community. Just steps from vibrant Whyte Ave yet situated on a peaceful street, this location offers the best of both worlds. Close proximity to the University of Alberta makes it ideal for students and investors alike. The home features brand new vinyl plank flooring and fresh paint throughout. With 2 spacious bedrooms and an assigned parking stall, convenience is at your doorstep. Enjoy quick access to public transportation, making it easy to explore the city. Donâ€™t miss this fantastic opportunity at a great price!

Built in 1983

## Essential Information

|                |                        |
|----------------|------------------------|
| MLS® #         | E4423455               |
| Price          | \$178,800              |
| Bedrooms       | 2                      |
| Bathrooms      | 1.00                   |
| Full Baths     | 1                      |
| Square Footage | 908                    |
| Acres          | 0.00                   |
| Year Built     | 1983                   |
| Type           | Condo / Townhouse      |
| Sub-Type       | Lowrise Apartment      |
| Style          | Single Level Apartment |



Status Active

## Community Information

Address 206 10731 84 Avenue  
Area Edmonton  
Subdivision Garneau  
City Edmonton  
County ALBERTA  
Province AB  
Postal Code T6E 2H8

## Amenities

Amenities On Street Parking, No Animal Home, No Smoking Home  
Parking Stall

## Interior

Appliances Dishwasher-Built-In, Hood Fan, Refrigerator, Stove-Electric  
Heating Baseboard, Natural Gas  
# of Stories 3  
Stories 3  
Has Basement Yes  
Basement None, No Basement

## Exterior

Exterior Wood, Stucco  
Exterior Features Back Lane, Public Transportation, Schools, Shopping Nearby  
Roof Asphalt Shingles  
Construction Wood, Stucco  
Foundation Concrete Perimeter

## Additional Information

Date Listed February 28th, 2025  
Days on Market 49  
Zoning Zone 15  
Condo Fee \$468

DATA IS DEEMED RELIABLE BUT IS NOT GUARANTEED ACCURATE BY THE REALTORS® ASSOCIATION OF EDMONTON. COPYRIGHT 2025 BY THE REALTORS® ASSOCIATION OF EDMONTON. ALL RIGHTS RESERVED. Trademarks are owned or controlled by the Canadian Real Estate Association (CREA) and identify real estate professionals who are members of CREA (REALTOR®, REALTORS®) and/or the quality of services they provide (MLS®, Multiple Listing Service®)

Listing information last updated on April 18th, 2025 at 10:32am MDT