

Courtesy Of Jeff D Jackson Of Bode

# \$519,900 - 310 Juniper Cove, Leduc

MLS® #E4423159

**\$519,900**

4 Bedroom, 3.00 Bathroom, 1,873 sqft  
Single Family on 0.00 Acres

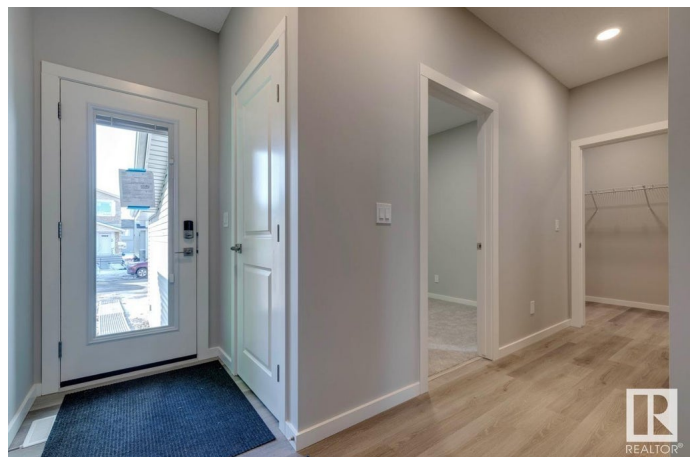
Woodbend, Leduc, AB

Welcome to the Stella Model by Bedrock Homes, a stunning blend of functionality & modern design. This spacious home offers 4 bedrooms & 3 bathrooms, featuring a main floor bedroom with a full bath—perfect for guests, a home office, or a flex space. The heart of the home boasts a great room with an electric fireplace, adjacent to a chef-inspired kitchen equipped with Samsung 4-piece stainless steel appliances, a walk-through pantry, & elegant finishes. Soaring 9' ceilings on the main floor & foundation walls enhance the sense of space, while the central upstairs bonus room provides a versatile area for relaxation or entertainment. The luxurious ensuite features dual sinks & a full shower, complemented by stylish paint-grade metal spindle railings throughout. Additional highlights include a separate side entrance for future basement development, a Smart Home package for modern convenience, & an 18' x 22' double front attached garage—making this home the perfect fusion of comfort & style.

Built in 2024

## Essential Information

MLS® #	E4423159
Price	\$519,900
Bedrooms	4



Bathrooms	3.00
Full Baths	3
Square Footage	1,873
Acres	0.00
Year Built	2024
Type	Single Family
Sub-Type	Detached Single Family
Style	2 Storey
Status	Active

### **Community Information**

Address	310 Juniper Cove
Area	Leduc
Subdivision	Woodbend
City	Leduc
County	ALBERTA
Province	AB
Postal Code	T9E 1S7

### **Amenities**

Amenities	No Animal Home, No Smoking Home
Parking Spaces	4
Parking	Double Garage Attached

### **Interior**

Interior Features	ensuite bathroom
Appliances	Dishwasher-Built-In, Oven-Microwave, Refrigerator, Stove-Electric
Heating	Forced Air-1, Natural Gas
Fireplace	Yes
Fireplaces	Insert
Stories	2
Has Basement	Yes
Basement	Full, Unfinished

### **Exterior**

Exterior	Wood, Stone, Vinyl
Exterior Features	Landscaped, Park/Reserve, Playground Nearby, Shopping Nearby
Roof	Asphalt Shingles
Construction	Wood, Stone, Vinyl

Foundation            Concrete Perimeter

### **Additional Information**

Date Listed            February 27th, 2025

Days on Market      13

Zoning                 Zone 81

DATA IS DEEMED RELIABLE BUT IS NOT GUARANTEED ACCURATE BY THE REALTORS® ASSOCIATION OF EDMONTON. COPYRIGHT 2025 BY THE REALTORS® ASSOCIATION OF EDMONTON. ALL RIGHTS RESERVED. Trademarks are owned or controlled by the Canadian Real Estate Association (CREA) and identify real estate professionals who are members of CREA (REALTOR®, REALTORS®) and/or the quality of services they provide (MLS®, Multiple Listing Service®)

Listing information last updated on March 12th, 2025 at 2:32pm MDT