

## \$539,000 - 7 Hull Wynd, Spruce Grove

MLS® #E4421850

**\$539,000**

4 Bedroom, 3.50 Bathroom, 1,552 sqft  
Single Family on 0.00 Acres

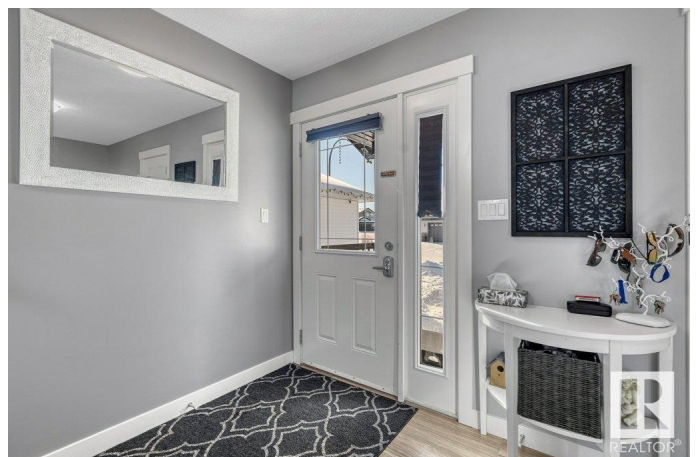
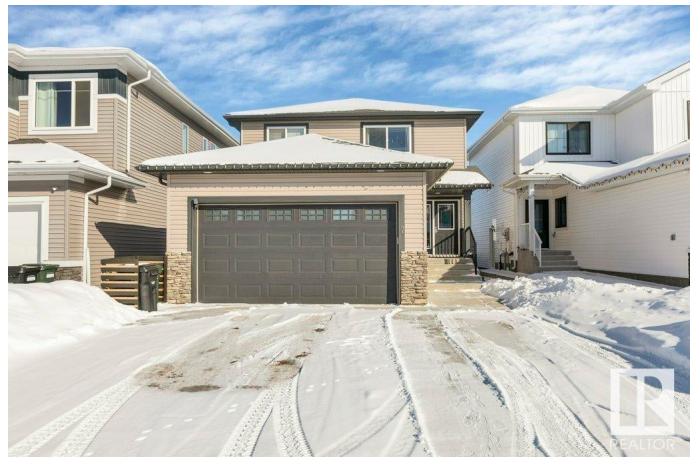
Hilldowns, Spruce Grove, AB

Step into this charming 4 bed, 2-storey home, with over 2000sqft, of living space where comfort & style come together! The main floor welcomes you with an inviting open-concept living room, complete with cozy gas fireplace—perfect for relaxing evenings. The kitchen shines with S/S appliances, sleek granite countertops, & main-floor laundry. Step through the eating area into your beautiful backyard, featuring a spacious 2 tiered deck, garden beds, shed, & plenty of room for kids to play or hosting unforgettable gatherings! Upstairs, you'll find a well-designed layout, including a luxurious ensuite with a corner soaker tub & double shower—a true retreat! The upstairs bedrooms are generously sized & have their very own walk-in closets. The finished basement offers a large rec room, extra bedroom, 4-piece bath—perfect for guests or family fun! To top it all off, your heated/insulated double garage is ready for winter, plus the oversized driveway provides extra parking! POSSESSION NEGOTIABLE

Built in 2016

### Essential Information

MLS® #	E4421850
Price	\$539,000
Bedrooms	4



Bathrooms	3.50
Full Baths	3
Half Baths	1
Square Footage	1,552
Acres	0.00
Year Built	2016
Type	Single Family
Sub-Type	Detached Single Family
Style	2 Storey
Status	Active

### **Community Information**

Address	7 Hull Wynd
Area	Spruce Grove
Subdivision	Hilldowns
City	Spruce Grove
County	ALBERTA
Province	AB
Postal Code	T7X 0X5

### **Amenities**

Amenities	Deck
Parking Spaces	4
Parking	Double Garage Attached

### **Interior**

Interior Features	ensuite bathroom
Appliances	Dishwasher-Built-In, Dryer, Garage Control, Garage Opener, Microwave Hood Fan, Refrigerator, Stove-Electric, Washer
Heating	Forced Air-1, Natural Gas
Stories	3
Has Basement	Yes
Basement	Full, Finished

### **Exterior**

Exterior	Wood, Vinyl
Exterior Features	Fenced, Golf Nearby, Playground Nearby, Schools
Roof	Asphalt Shingles
Construction	Wood, Vinyl

Foundation            Concrete Perimeter

### **Additional Information**

Date Listed            February 17th, 2025

Days on Market      23

Zoning                 Zone 91

DATA IS DEEMED RELIABLE BUT IS NOT GUARANTEED ACCURATE BY THE REALTORS® ASSOCIATION OF EDMONTON. COPYRIGHT 2025 BY THE REALTORS® ASSOCIATION OF EDMONTON. ALL RIGHTS RESERVED. Trademarks are owned or controlled by the Canadian Real Estate Association (CREA) and identify real estate professionals who are members of CREA (REALTOR®, REALTORS®) and/or the quality of services they provide (MLS®, Multiple Listing Service®)

Listing information last updated on March 12th, 2025 at 8:17pm MDT