

Courtesy Of Jagmeet Singh Of MaxWell Polaris

\$635,000 - 2913 Maple Way, Edmonton

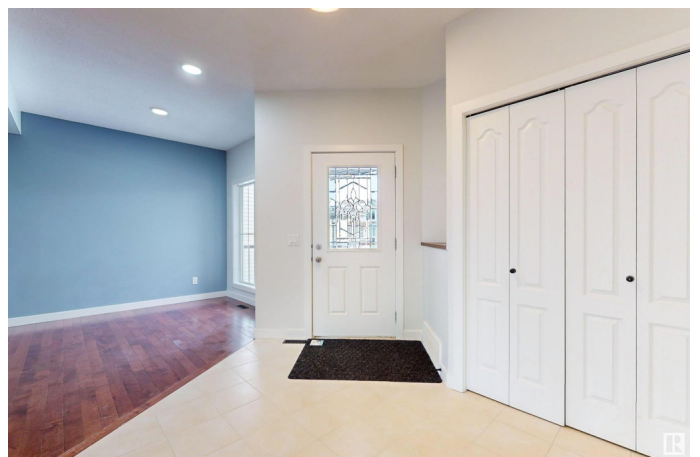
MLS® #E4421306

\$635,000

5 Bedroom, 3.00 Bathroom, 2,435 sqft
Single Family on 0.00 Acres

Maple Crest, Edmonton, AB

Welcome to this Beautiful 2 STOREY CUSTOM BUILT 2435 Sq Ft DOUBLE ATTACHED GARAGE home in Maple which offers 5 BEDROOMS, 3 BATHS, 2 LIVING ROOMS, a CHEF'S KITCHEN with walk in pantry and tons of cabinet space. You are first amazed with the open foyer entry leading to a main floor bedroom which has a full 3 pc washroom few steps from the living room which showcase a freshly designed stone wall and Gas fireplace for those cozy moments. Upstairs you will find 4 bedrooms including the Master bedroom with its 5 pc ensuite that includes double sinks, tub, standup shower & walk in closet. Completing the upper level is 4 pc washroom & laundry room. The Huge full unfinished basement awaits your creative ideas. Outside is a large yard for your kids. This home recent upgrades includes fresh painted with neutral colors, lighting fixtures, flooring and much more. Opportunity awaits in one of the most desirable locations at an affordable price. Home is close to all major amenities and easy access to Anthony Henday.



Built in 2014

Essential Information

MLS® #	E4421306
Price	\$635,000

Bedrooms	5
Bathrooms	3.00
Full Baths	3
Square Footage	2,435
Acres	0.00
Year Built	2014
Type	Single Family
Sub-Type	Detached Single Family
Style	2 Storey
Status	Active

Community Information

Address	2913 Maple Way
Area	Edmonton
Subdivision	Maple Crest
City	Edmonton
County	ALBERTA
Province	AB
Postal Code	T6T 0T4

Amenities

Amenities	Deck, Hot Water Natural Gas, HRV System, Natural Gas Stove Hookup
Parking	Double Garage Attached

Interior

Interior Features	ensuite bathroom
Appliances	Dishwasher-Built-In, Dryer, Hood Fan, Refrigerator, Stove-Electric, Washer
Heating	Forced Air-1, Natural Gas
Fireplace	Yes
Fireplaces	Stone Facing
Stories	2
Has Basement	Yes
Basement	Full, Unfinished

Exterior

Exterior	Wood, Vinyl
Exterior Features	Fenced, See Remarks
Roof	Asphalt Shingles

Construction Wood, Vinyl
Foundation Concrete Perimeter

Additional Information

Date Listed February 12th, 2025
Days on Market 30
Zoning Zone 30

DATA IS DEEMED RELIABLE BUT IS NOT GUARANTEED ACCURATE BY THE REALTORS® ASSOCIATION OF EDMONTON. COPYRIGHT 2025 BY THE REALTORS® ASSOCIATION OF EDMONTON. ALL RIGHTS RESERVED. Trademarks are owned or controlled by the Canadian Real Estate Association (CREA) and identify real estate professionals who are members of CREA (REALTOR®, REALTORS®) and/or the quality of services they provide (MLS®, Multiple Listing Service®)

Listing information last updated on March 14th, 2025 at 3:02am MDT