

Courtesy Of Wally Karout Of Royal LePage Arteam Realty

## \$559,998 - 258 Sunland Way, Sherwood Park

MLS® #E4420820

**\$559,998**

3 Bedroom, 2.50 Bathroom, 1,753 sqft

Single Family on 0.00 Acres

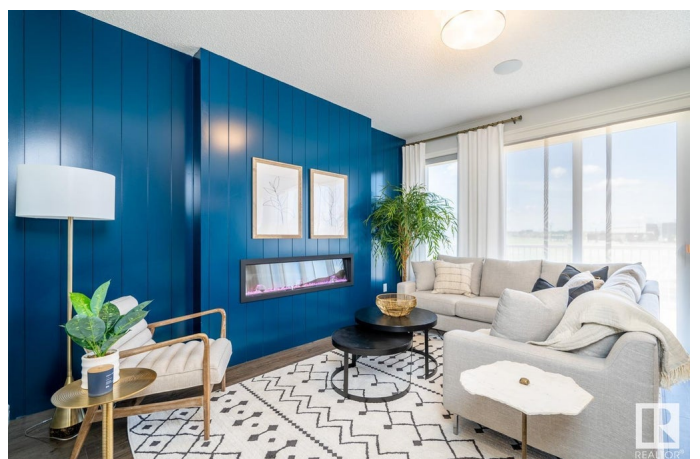
Summerwood, Sherwood Park, AB

Welcome to the "Willow" built by the award-winning builder Pacesetter homes and is located in the heart of Summerwood and just steps to the walking trails. As you enter the home you are greeted by luxury vinyl plank flooring throughout the great room, kitchen, and the breakfast nook. Your large kitchen features tile back splash, an island a flush eating bar, quartz counter tops and an undermount sink. Just off of the kitchen and tucked away by the front entry is a 2 piece powder room. Upstairs is the master's retreat with a large walk in closet and a 4-piece en-suite. The second level also include 3 additional bedrooms with a conveniently placed main 4-piece bathroom. Close to all amenities and easy access to the yellowhead trail and to the Anthony Henday.\*\*\* Home is Under Construction photos are of the show home and colors and finishings may vary, this home will be complete by August of this year\*\*\*

Built in 2025

### Essential Information

|           |           |
|-----------|-----------|
| MLS® #    | E4420820  |
| Price     | \$559,998 |
| Bedrooms  | 3         |
| Bathrooms | 2.50      |



|                |                        |
|----------------|------------------------|
| Full Baths     | 2                      |
| Half Baths     | 1                      |
| Square Footage | 1,753                  |
| Acres          | 0.00                   |
| Year Built     | 2025                   |
| Type           | Single Family          |
| Sub-Type       | Detached Single Family |
| Style          | 2 Storey               |
| Status         | Active                 |

### **Community Information**

|             |                 |
|-------------|-----------------|
| Address     | 258 Sunland Way |
| Area        | Sherwood Park   |
| Subdivision | Summerwood      |
| City        | Sherwood Park   |
| County      | ALBERTA         |
| Province    | AB              |
| Postal Code | T8H 2X7         |

### **Amenities**

|           |                        |
|-----------|------------------------|
| Amenities | See Remarks            |
| Parking   | Double Garage Attached |

### **Interior**

|                   |  |
|-------------------|--|
| Interior Features | ensuite bathroom                           |
| Appliances        | Garage Control, Garage Opener, See Remarks |
| Heating           | Forced Air-1, Natural Gas                  |
| Stories           | 2  |
| Has Basement      | Yes  |
| Basement          | Full, Unfinished                           |

### **Exterior**

|                   |  |
|-------------------|--|
| Exterior          | Wood, Stone, Vinyl   |
| Exterior Features | Golf Nearby, Park/Reserve, Playground Nearby, Public Swimming Pool, Public Transportation, Schools, Shopping Nearby, See Remarks |
| Roof              | Asphalt Shingles   |
| Construction      | Wood, Stone, Vinyl   |
| Foundation        | Concrete Perimeter   |

### **Additional Information**

Date Listed February 6th, 2025

Days on Market 35

Zoning Zone 25

DATA IS DEEMED RELIABLE BUT IS NOT GUARANTEED ACCURATE BY THE REALTORS® ASSOCIATION OF EDMONTON. COPYRIGHT 2025 BY THE REALTORS® ASSOCIATION OF EDMONTON. ALL RIGHTS RESERVED. Trademarks are owned or controlled by the Canadian Real Estate Association (CREA) and identify real estate professionals who are members of CREA (REALTOR®, REALTORS®) and/or the quality of services they provide (MLS®, Multiple Listing Service®)

Listing information last updated on March 12th, 2025 at 10:47pm MDT