

## \$279,900 - 403 10238 103 Street, Edmonton

MLS® #E4415963

**\$279,900**

1 Bedroom, 1.00 Bathroom, 691 sqft

Condo / Townhouse on 0.00 Acres

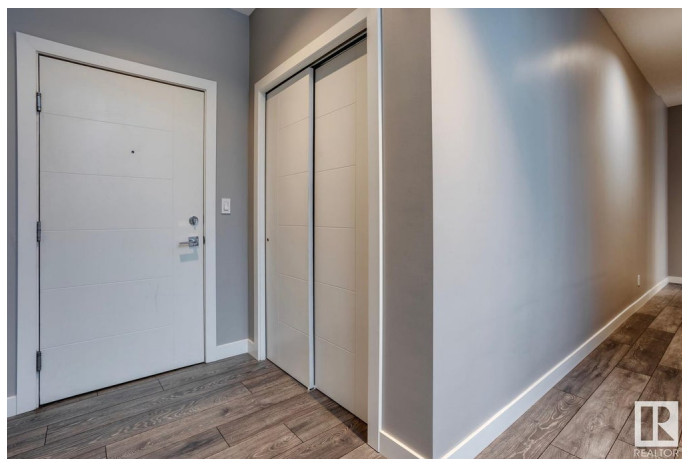
Downtown (Edmonton), Edmonton, AB

Welcome to LOFT suite 403 in ULTIMA Tower. Feel like you are part of the action from the comfort of your living room! This 4th floor 1 bedroom loft is open concept, airy AND spacious, perfect for entertaining! Fall in love with the designer kitchen with quartz countertops, full-size stainless steel appliances and in-suite laundry. Relax and enjoy ULTIMA's massive indoor/outdoor 10th floor amenities - year-round use outdoor patio with hot tub, party room and fitness area... This suite comes with 1 titled underground stall in the city's prime + central location parkade. There's more... Ultima Tower is located within steps of Western Canada's largest mixed used sports + entertainment district (ICE District + Rogers Place), the BEST restaurants, LRT, major banks and convenient groceries + more. What's not to love!?!?

Built in 2016

### Essential Information

MLS® #	E4415963
Price	\$279,900
Bedrooms	1
Bathrooms	1.00
Full Baths	1
Square Footage	691
Acres	0.00



Year Built	2016
Type	Condo / Townhouse
Sub-Type	Apartment High Rise
Style	Single Level Apartment
Status	Active

### Community Information

Address	403 10238 103 Street
Area	Edmonton
Subdivision	Downtown (Edmonton)
City	Edmonton
County	ALBERTA
Province	AB
Postal Code	T5J 0G6

### Amenities

Amenities	Air Conditioner, Ceiling 9 ft., Deck, Exercise Room, Hot Tub, No Smoking Home, Party Room, Secured Parking, Security Personnel, Social Rooms
Parking Spaces	1
Parking	Underground

### Interior

Interior Features	ensuite bathroom
Appliances	Air Conditioning-Central, Dishwasher-Built-In, Dryer, Microwave Hood Fan, Refrigerator, Stove-Electric, Washer, Window Coverings
Heating	Heat Pump, Natural Gas
# of Stories	33
Stories	1
Has Basement	Yes
Basement	None, No Basement

### Exterior

Exterior	Concrete, Brick, Metal
Exterior Features	Back Lane, Commercial, Flat Site, Paved Lane, Playground Nearby, Public Transportation, Schools, Shopping Nearby, View City, View Downtown
Roof	EPDM Membrane
Construction	Concrete, Brick, Metal
Foundation	Concrete Perimeter

**Additional Information**

Date Listed	December 13th, 2024
Days on Market	125
Zoning	Zone 12
Condo Fee	\$560

DATA IS DEEMED RELIABLE BUT IS NOT GUARANTEED ACCURATE BY THE REALTORS® ASSOCIATION OF EDMONTON. COPYRIGHT 2025 BY THE REALTORS® ASSOCIATION OF EDMONTON. ALL RIGHTS RESERVED.Trademarks are owned or controlled by the Canadian Real Estate Association (CREA) and identify real estate professionals who are members of CREA (REALTOR®, REALTORS®) and/or the quality of services they provide (MLS®, Multiple Listing Service®)

Listing information last updated on April 16th, 2025 at 10:17pm MDT