

# \$5,670,000 - 380 Clareview Station Drive, Edmonton

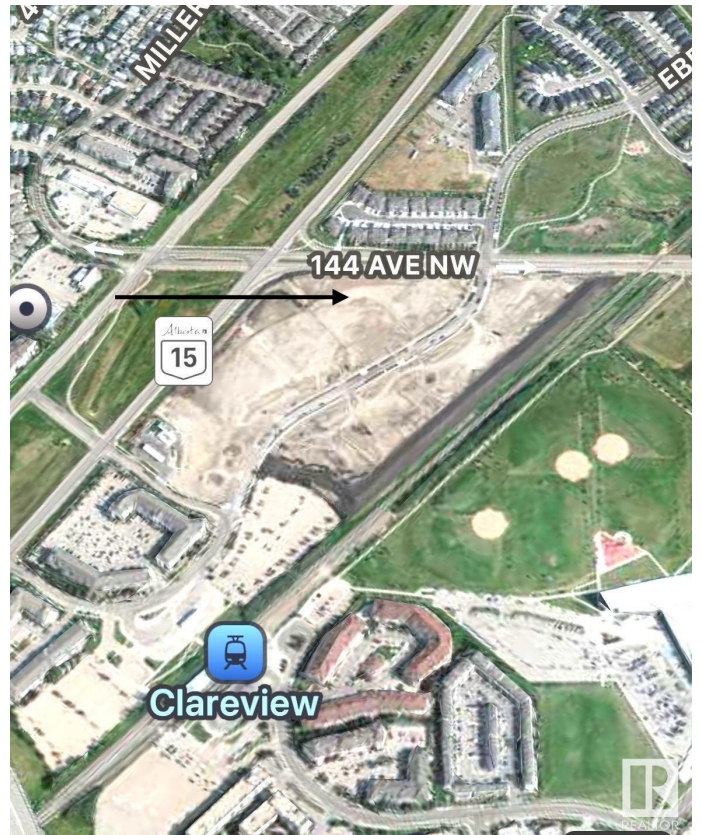
MLS® #E4415579

**\$5,670,000**

0 Bedroom, 0.00 Bathroom,  
Land Commercial on 0.00 Acres

Clareview Town Centre, Edmonton, AB

HIGH EXPOSURE 3.24 ACRES MU-ZONED LAND FOR SALE!! Great development opportunity next to Clareview LRT Station, Recreation Centre, Library, and a new 2-acre park. With unmatched connectivity, 1400-1500 new apartments planned, and traffic exposure of over 50,000 vehicles/day, this prime site offers exceptional potential for diverse development projects.



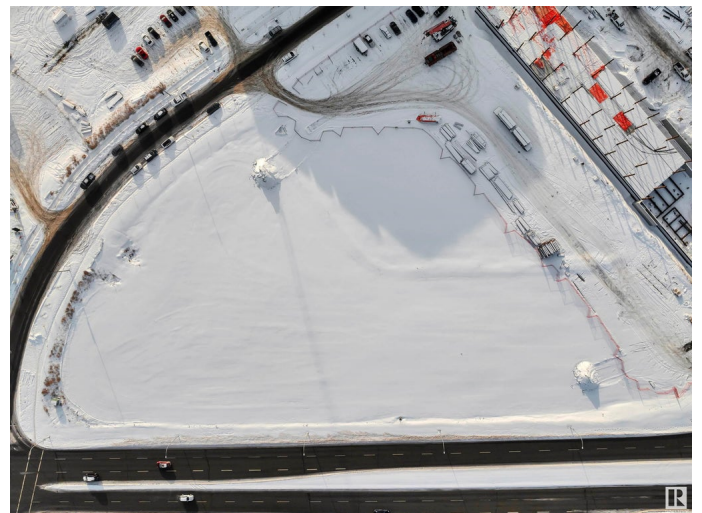
## Essential Information

|           |                 |
|-----------|-----------------|
| MLS® #    | E4415579        |
| Price     | \$5,670,000     |
| Bathrooms | 0.00            |
| Acres     | 0.00            |
| Type      | Land Commercial |
| Status    | Active          |

## Community Information

|             |                             |
|-------------|-----------------------------|
| Address     | 380 Clareview Station Drive |
| Area        | Edmonton                    |
| Subdivision | Clareview Town Centre       |
| City        | Edmonton                    |
| County      | ALBERTA                     |
| Province    | AB                          |
| Postal Code | T5Y 0L9                     |

## Additional Information



|                |                    |
|----------------|--------------------|
| Date Listed    | December 5th, 2024 |
| Days on Market | 120                |
| Zoning         | Zone 35            |

DATA IS DEEMED RELIABLE BUT IS NOT GUARANTEED ACCURATE BY THE REALTORS® ASSOCIATION OF EDMONTON. COPYRIGHT 2025 BY THE REALTORS® ASSOCIATION OF EDMONTON. ALL RIGHTS RESERVED. Trademarks are owned or controlled by the Canadian Real Estate Association (CREA) and identify real estate professionals who are members of CREA (REALTOR®, REALTORS®) and/or the quality of services they provide (MLS®, Multiple Listing Service®)

Listing information last updated on April 4th, 2025 at 8:02am MDT